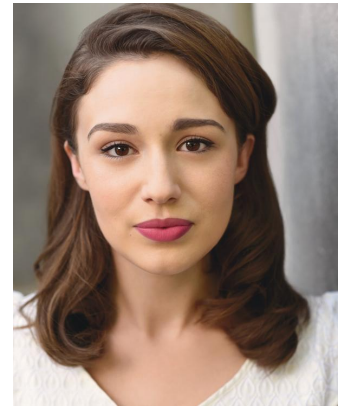


Madeline Easley



Wyandotte Nation of Oklahoma



EMC, SAG-AFTRA-Eligible

Maddieeasley.com
maddieeasleyinfo@gmail.com
5'8 - Brown Hair, Brown Eyes

Theatre - Off Broadway

THEATRE FOR ONE-DEJA VU QUANTUM*	Sequoyah Jolene Ivy	Signature Theatre Primary Stages	Rudy Ramirez Madeline Easley
-------------------------------------	------------------------	-------------------------------------	---------------------------------

Theatre - New York

Q. CLEOPATRA AND P. POCAHONTAS* ANTIKONI* COWBOY FACE	Pocahontas Ismene Corinne	Next Door at NYTW New York Classical Theatre Dixon Place Theatre	Tara Moses Jen Olivares Deby Xiadani
---	---------------------------------	--	--

Theatre - Regional

FLYING BIRD'S DIARY* SHANE** THE NUT, THE CROW...AND THE MONK** THE TRUE STORY OF POCAHONTAS HENRY VI A COMEDY OF ERRORS	Emma Shappa Prima Pocahontas Suffolk, Rutland u/s Adriana	Long Wharf Theatre Cincinnati Playhouse in the Park Baltimore Center Stage Serenbe Playhouse Great River Shakespeare Festival Great River Shakespeare Festival	Madeline Sayet Blake Robinson Nicole Watson Tara Moses Bryan Hunt Melissa Rain Anderson
---	--	---	---

Film

THE FEATHERED GIRL SHOULD HAVE DANCED (mv) <i>By Nicotine Dolls</i>	Lead Lead	Outaline Productions Outaline Productions	Nyssa Grant Sam Cieri
---	--------------	--	--------------------------

Training

University of Evansville - BS Theatre Performance
Great River Shakespeare Festival Acting Apprentice Program

Special Skills

North American Indigenous Languages, Improv, Fiddle, Excellent Hula-Hooper

*denotes a staged reading that culminated in ticketed public performance

**denotes a workshop